

Violini I
Tempo di Marcia

Kai Norman Andersen - potpourri

Handwritten musical score for Violini I, Tempo di Marcia, Kai Norman Andersen - potpourri. The score consists of 11 staves of music in G major (one sharp) and 2/4 time. It includes various musical notations such as dynamics (mf, cresc, f, ff, p, mf), articulation (accents, slurs), and performance instructions like 'pizz' and 'Moderato'. The score is divided into sections labeled A through G.

Violin I

Violin I part, first system. Includes dynamic markings like *p*, *mf*, and *f*, and articulation marks like accents and slurs.

Tanga section, second system. Includes dynamic markings like *p*, *mf*, and *f*, and articulation marks like accents and slurs.

Tanga section, third system. Includes dynamic markings like *p*, *mf*, and *f*, and articulation marks like accents and slurs.

Tanga section, fourth system. Includes dynamic markings like *p*, *mf*, and *f*, and articulation marks like accents and slurs.

Tanga section, fifth system. Includes dynamic markings like *p*, *mf*, and *f*, and articulation marks like accents and slurs.

Tanga section, sixth system. Includes dynamic markings like *p*, *mf*, and *f*, and articulation marks like accents and slurs.

Tanga section, seventh system. Includes dynamic markings like *p*, *mf*, and *f*, and articulation marks like accents and slurs.

Tanga section, eighth system. Includes dynamic markings like *p*, *mf*, and *f*, and articulation marks like accents and slurs.

Tanga section, ninth system. Includes dynamic markings like *p*, *mf*, and *f*, and articulation marks like accents and slurs.

Tanga section, tenth system. Includes dynamic markings like *p*, *mf*, and *f*, and articulation marks like accents and slurs.

Tanga section, eleventh system. Includes dynamic markings like *p*, *mf*, and *f*, and articulation marks like accents and slurs.

Tanga section, twelfth system. Includes dynamic markings like *p*, *mf*, and *f*, and articulation marks like accents and slurs.

Violin I

Medium Fox

clar + Picc.

Soli

Violin I

Handwritten musical notation on a single staff. It begins with a treble clef and a key signature of one flat. The notation includes various note values, rests, and dynamic markings such as *fz* and *f*. There are also handwritten annotations like a circled 'U' and several 'v' symbols above the notes.

Handwritten musical notation on a single staff, continuing from the previous system. It features a circled 'U' above the staff and various note values and rests.

Handwritten musical notation on a single staff. It includes a circled 'V' above the staff and various note values and rests.

Handwritten musical notation on a single staff. It includes the handwritten text "Rolieg Vals" above the staff and various note values and rests.

Handwritten musical notation on a single staff. It includes a circled 'X' above the staff and various note values and rests.

Handwritten musical notation on a single staff. It includes the handwritten text "Meno mosso mf" above the staff and various note values and rests.

Handwritten musical notation on a single staff. It includes the handwritten text "mf cresc" above the staff and various note values and rests.

Handwritten musical notation on a single staff. It includes a circled 'Y' above the staff and various note values and rests.

Handwritten musical notation on a single staff. It includes various note values and rests.

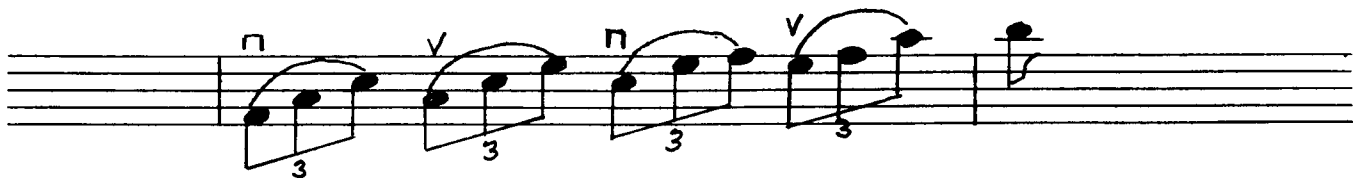
Handwritten musical notation on a single staff. It includes various note values and rests.

Handwritten musical notation on a single staff. It includes the handwritten text "maestoso" above the staff and various note values and rests.

Handwritten musical notation on a single staff. It includes the handwritten text "rit" above the staff and various note values and rests.

Kai Normann Andersen - Pot.

TAKT 4



Kai Normann