

An ARTIE SHAW Arrangement

NIGHT AND DAY

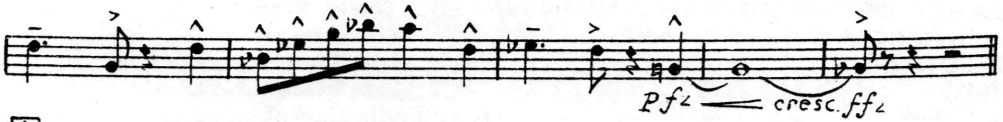
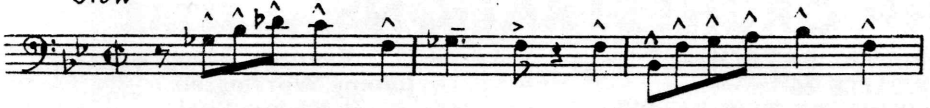
From the Musical Comedy "GAY DIVORCE"

Scored by
JERRY GRAY
Bass

FOX TROT

By COLE PORTER

Slow



A



B



C



D

Section D consists of three staves of music. The first staff begins with a treble clef and a key signature of two flats (B-flat and E-flat). The music is written in bass clef. It features a series of eighth and sixteenth notes, with some rests and dynamic markings. The second staff continues the melodic line. The third staff concludes the section with a double bar line.

E

Section E consists of three staves of music. The first staff begins with a treble clef and a key signature of two flats. The music is written in bass clef. It features a series of eighth and sixteenth notes, with some rests and dynamic markings. The second staff continues the melodic line. The third staff concludes the section with a double bar line.

F

Section F consists of one staff of music. The first staff begins with a treble clef and a key signature of two flats. The music is written in bass clef. It features a series of eighth and sixteenth notes, with some rests and dynamic markings. The section concludes with a double bar line.

G

Section G consists of two staves of music. The first staff begins with a treble clef and a key signature of two flats. The music is written in bass clef. It features a series of eighth and sixteenth notes, with some rests and dynamic markings. The second staff continues the melodic line and concludes the section with a double bar line.

H

Section H consists of three staves of music. The first staff begins with a treble clef and a key signature of two flats. The music is written in bass clef. It features a series of eighth and sixteenth notes, with some rests and dynamic markings. The second staff continues the melodic line. The third staff concludes the section with a double bar line. Dynamic markings include *pp*, *ff*, and *pfz*.