

№ 33

Puszta-Klänge 1268

Ungarisches Potpourri
- Arhus Pensionist

R. Juckelandt

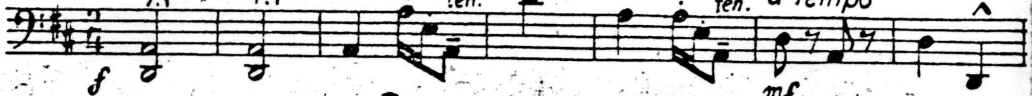
Cello

Orkester

Allegretto Frei im Vortrag

ten.

ten. a tempo



Frei

ten.

ten.

f

coll.

pp

mf

Moderato (sehr rhythmisch)



Frei

ten.

ten.

pp



a tempo

mf

ff



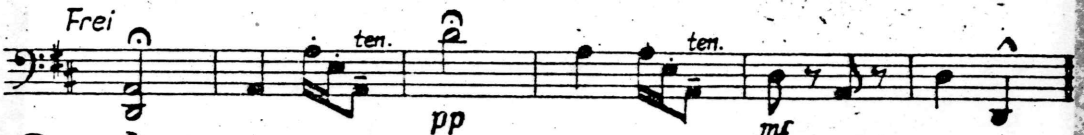
Frei

ten.

ten.

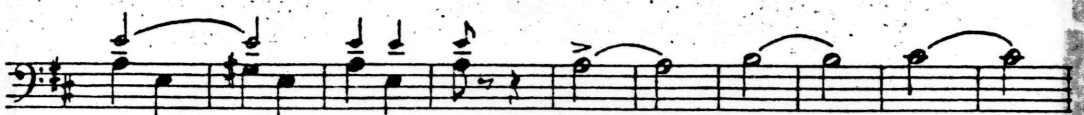
pp

mf



① Allegro Horn

f



Copyright MCMALIII by Risi-Ton-Verlag, Berlin W 30
Eigentum für alle Länder: Risi-Ton-Verlag, Berlin W 30

Aufführungsrecht vorbehalten

Risi - TON-VERLAG BERLIN W 30
(RICHARD SIEDENTOPF)

Risi 112

2 stk

Cello

② *Andante molto (rubato)*

Musical score for Cello, measures 1-10 of section 2. The score is written in bass clef with a key signature of one flat (B-flat). The tempo is *Andante molto (rubato)*. The first measure starts with a dynamic marking of *ff* (fortissimo) and a 2/4 time signature. The second measure has a dynamic marking of *mf* (mezzo-forte). The score includes various note values, rests, and phrasing slurs. The final measure of this section has a dynamic marking of *p* (piano).

③ *Moderato (sehr rhythmisch)*

Musical score for Cello, measures 11-18 of section 3. The tempo is *Moderato (sehr rhythmisch)*. The first measure has a dynamic marking of *mf* (mezzo-forte). The second measure has a dynamic marking of *f* (forte). The score includes various note values, rests, and phrasing slurs. The final measure of this section has a dynamic marking of *string.* (string). The score is divided into two parts, 1. and 2., with a repeat sign between them.

④ *Allegro*

Musical score for Cello, measures 19-22 of section 4. The tempo is *Allegro*. The first measure has a dynamic marking of *p* (piano). The score includes various note values, rests, and phrasing slurs. The final measure of this section has a dynamic marking of *ff* (fortissimo).

Cello

4

⑤ Allegro vivo

Musical score for Cello, measures 1-5 of section 5. The music is in bass clef with a key signature of one sharp (F#). It begins with a repeat sign and a dynamic marking of *mf*. The first staff contains a series of eighth notes. The second staff continues with eighth notes and a dynamic marking of *f*. The third and fourth staves feature half notes with long slurs. The fifth staff concludes with a double bar line and a repeat sign.

⑥ Presto

Musical score for Cello, measures 6-10 of section 6. The music is in bass clef with a key signature of one sharp (F#). It begins with a repeat sign and a dynamic marking of *ff*. The first staff contains eighth notes with accents. The second staff continues with eighth notes and a dynamic marking of *ff*. The third staff features a half note with a slur and a dynamic marking of *ff*. The fourth and fifth staves contain half notes with slurs. The sixth staff concludes with a double bar line and a repeat sign.