

311

228

Tromba b.

Tanzen möchte ich

Arhus Pensionist
Orkester

Andante

15

1 rit. Tempo di valse

5 Vals 1

5

5 rit.

4 4 4

ff

Nr 2

3 2

17

Nr 220

Handwritten musical notation on a single staff. It begins with a treble clef and a key signature of one sharp (F#). The notation includes a series of eighth and sixteenth notes, followed by a double bar line and a section starting with a measure marked '12'. Above the staff, the word 'rit' is written with an arrow pointing to the start of the second section.

Handwritten musical notation on a single staff. It starts with a treble clef and a key signature of one sharp (F#). The word 'rit' is written above the staff with an arrow. The notation features a sequence of notes with slurs, ending with a double bar line.

Handwritten musical notation on a single staff. It begins with a treble clef and a key signature of one sharp (F#). The notation includes notes with slurs and a measure marked with the number '8'. A double bar line is present, followed by a measure marked with the number '1'.

Handwritten musical notation on a single staff. It starts with a treble clef and a key signature of two sharps (F# and C#). The notation includes notes with slurs and a measure marked with the number '3'. A double bar line is present, followed by another measure marked with the number '3'.

Handwritten musical notation on a single staff. It begins with a treble clef and a key signature of two sharps (F# and C#). The notation includes notes with slurs and a measure marked with the number '1'. A double bar line is present, followed by a measure marked with the number '16'. The dynamic marking 'ff' is written below the staff.

Handwritten musical notation on a single staff. It starts with a treble clef and a key signature of two sharps (F# and C#). The notation includes notes with slurs and a measure marked with the number '4'. A double bar line is present, followed by another measure marked with the number '4'.

Handwritten musical notation on a single staff. It begins with a treble clef and a key signature of two sharps (F# and C#). The notation includes notes with slurs and accents (^) above several notes. The dynamic marking 'ff' is written below the staff.

Handwritten musical notation on a single staff. It starts with a treble clef and a key signature of two sharps (F# and C#). The notation includes notes with slurs and accents (^) above several notes. The dynamic marking 'ff' is written below the staff.

Handwritten musical notation on a single staff. It begins with a treble clef and a key signature of two sharps (F# and C#). The notation includes notes with slurs and accents (^) above several notes.

Handwritten musical notation on a single staff. It starts with a treble clef and a key signature of two sharps (F# and C#). The notation includes notes with slurs and accents (^) above several notes.

Arhus Pensionat
Orkester

228

Nr 4

1 Langsom

Handwritten musical notation on a single staff. It begins with a treble clef, a key signature of two sharps (F# and C#), and a 3/4 time signature. The music consists of a sequence of quarter and eighth notes. A first ending bracket is present, leading to a section with a key signature change to one sharp (F#) and a 1/6 time signature. The piece concludes with a fermata over a final note.

Handwritten musical notation on a single staff, continuing the melody from the first staff. It features a series of eighth and quarter notes with various phrasing slurs.

Handwritten musical notation on a single staff, continuing the melody. It includes a fermata over the final note of the section.

Handwritten musical notation on a single staff, continuing the melody. It features a double bar line with repeat dots, followed by a series of eighth notes.

Handwritten musical notation on a single staff, continuing the melody. It includes a first ending bracket and a fermata over the final note.

Handwritten musical notation on a single staff, continuing the melody. It features a double bar line with repeat dots and a fermata over the final note.

Coda

Handwritten musical notation on a single staff, starting the Coda section. It begins with a treble clef, a key signature of two sharps, and a 3/4 time signature.

Handwritten musical notation on a single staff, continuing the Coda section. It includes a key signature change to two sharps and a fermata over the final note.

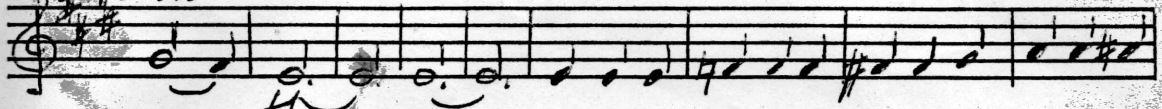
Grandioso

Handwritten musical notation on a single staff, continuing the Coda section. It features a key signature change to two sharps and a fermata over the final note.

Handwritten musical notation on a single staff, continuing the Coda section. It includes a key signature change to two sharps and a fermata over the final note.

DSab

rit Presto

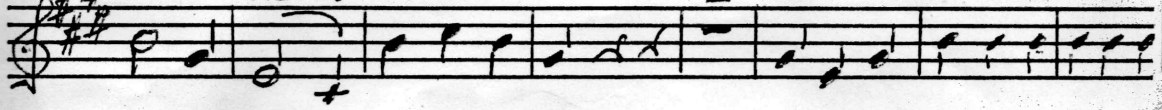


ff

accel

1

Molto rit.



accel.

