

VED DONAU

Tekst: MOGENS DAM

5

Johann Strauß

Violin obligat

ff

An der schönen blauen Donau.

p

f

ff

f

mf

f

mf

f

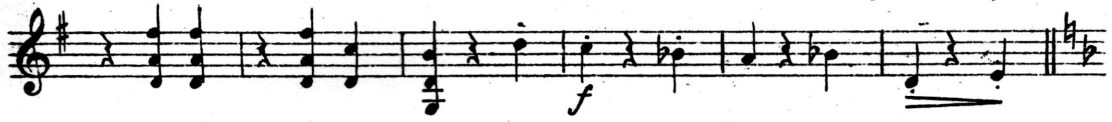
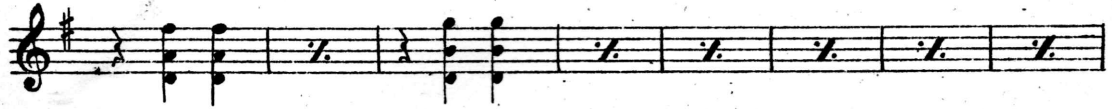
Schatzwalzer.

f

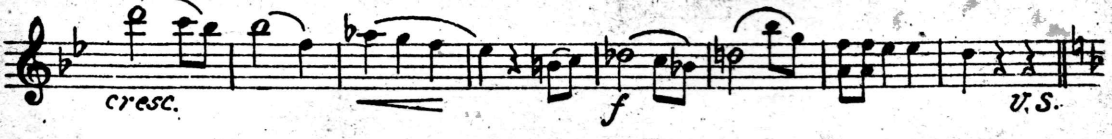
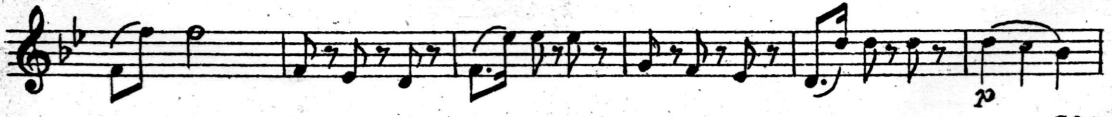
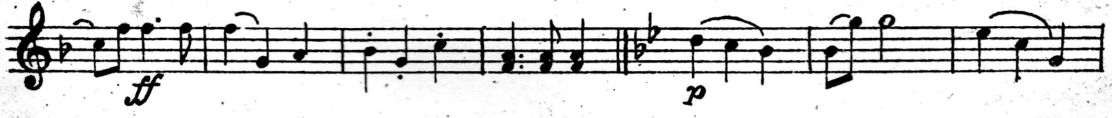
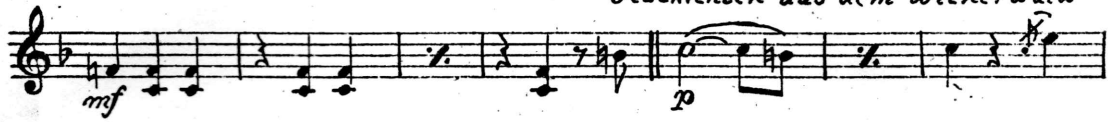
S BREDDER

ss-Potpourri

Musik: ved OTTO LINGTON
arr. Vilfred Kjær



Geschichten aus dem Wienerwald



Violin obligat

Du und Du

Musical notation for the first system of 'Du und Du'. It consists of two staves. The first staff begins with a treble clef, a key signature of one flat (B-flat), and a 4/4 time signature. The melody starts with a half note G4, followed by quarter notes A4, Bb4, and C5. Dynamics include *sfz* and *mf*. The second staff continues the melody with similar notes and dynamics, including *sfz*.

Rosen aus dem Süden.

Musical notation for the second system of 'Rosen aus dem Süden'. It consists of two staves. The first staff begins with a treble clef, a key signature of two flats (B-flat, E-flat), and a 4/4 time signature. The melody starts with a half note G3, followed by quarter notes A3, Bb3, and C4. Dynamics include *f* and *p*. The second staff continues the melody with similar notes and dynamics, including *f* and *ff*.

Morgenblätter.

Musical notation for the third system of 'Morgenblätter'. It consists of two staves. The first staff begins with a treble clef, a key signature of one sharp (F#), and a 4/4 time signature. The melody starts with a half note G4, followed by quarter notes A4, B4, and C5. Dynamics include *f* and *p*. The second staff continues the melody with similar notes and dynamics, including *f* and *cresc.*

Wienerblüt.

Musical notation for the fourth system of 'Wienerblüt'. It consists of two staves. The first staff begins with a treble clef, a key signature of one sharp (F#), and a 4/4 time signature. The melody starts with a half note G4, followed by quarter notes A4, B4, and C5. Dynamics include *p* and *f*. The second staff continues the melody with similar notes and dynamics, including *f*.

Violin obligat

№ 201

The first system consists of three staves of music. The top staff begins with a treble clef and a key signature of one sharp (F#). The music features a melodic line with various note values and rests. The middle staff continues the melodic line. The bottom staff provides a harmonic accompaniment with chords and single notes.

Wein, Weib und Gesang.

The second system consists of three staves of music. The top staff begins with a treble clef and a key signature of two flats (Bb, Eb). The music features a melodic line with various note values and rests. The middle staff continues the melodic line. The bottom staff provides a harmonic accompaniment with chords and single notes.

The third system consists of three staves of music. The top staff begins with a treble clef and a key signature of two flats (Bb, Eb). The music features a melodic line with various note values and rests. The middle staff continues the melodic line. The bottom staff provides a harmonic accompaniment with chords and single notes.

The fourth system consists of three staves of music. The top staff begins with a treble clef and a key signature of two flats (Bb, Eb). The music features a melodic line with various note values and rests. The middle staff continues the melodic line. The bottom staff provides a harmonic accompaniment with chords and single notes.

The fifth system consists of three staves of music. The top staff begins with a treble clef and a key signature of two sharps (F#, C#). The music features a melodic line with various note values and rests. The middle staff continues the melodic line. The bottom staff provides a harmonic accompaniment with chords and single notes.