

26.

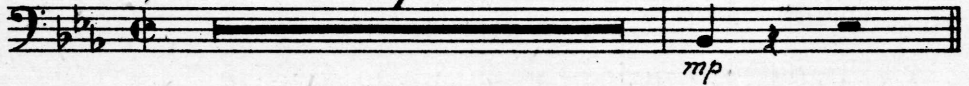
# WHISPERING GRON

Orch. scored by  
LARRY CLINTON

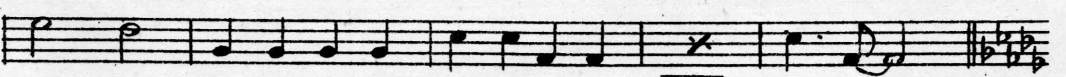
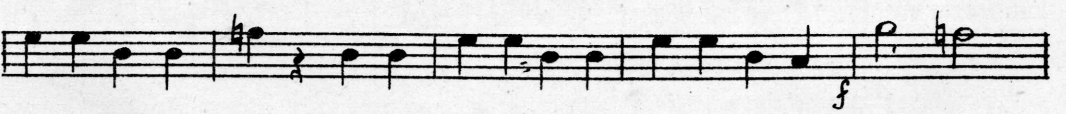
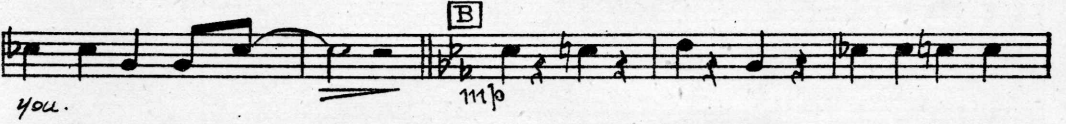
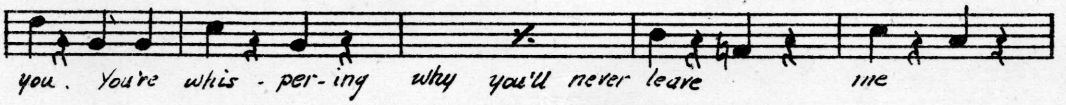
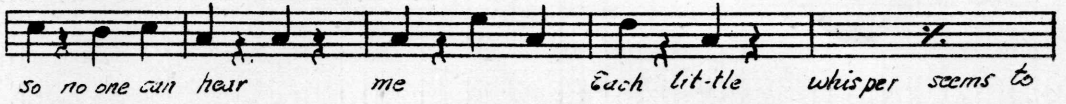
Words and Music by { JOHN SCHONBERGER  
MALVIN SCHONBERGER  
Bass

*Moderately Bright*

MPO  
319



**A**



Copyright MCMXX by MILLER MUSIC Inc., New York  
HERMAN DAREWSKI Music Publishing Co., 9-10, New Compton Street, London, W.C.2  
(Incorporating Charles Sheard & Co) International Copyright Secured and Reserved  
Authorized for sale and distribution in all British Possessions excepting Canada & Australasia

Gustav Thomsen  
Musikverlag

Bass

C

Musical notation for section C, consisting of five staves of music in bass clef with a key signature of two flats. The first staff starts with a piano (*p*) dynamic. The second staff has a first ending bracket. The third staff has a piano (*p*) dynamic. The fourth staff has a forte (*f*) dynamic. The fifth staff ends with a double bar line.

D

Musical notation for section D, consisting of one staff of music in bass clef with a key signature of two flats. It starts with a fortissimo (*ff*) dynamic and ends with a double bar line.

E

Musical notation for section E, consisting of two staves of music in bass clef with a key signature of two flats. The first staff starts with a forte (*f*) dynamic and contains several rests. The second staff continues the melody.

F

Musical notation for section F, consisting of one staff of music in bass clef with a key signature of two flats. It starts with a piano (*p*) dynamic and contains several rests.

G

Musical notation for section G, consisting of one staff of music in bass clef with a key signature of two flats. It starts with a fortissimo (*ff*) dynamic and contains several rests.

Musical notation for the final section, consisting of one staff of music in bass clef with a key signature of two flats. It features a 4-measure rest and ends with a piano (*p*) dynamic.

PLEASE INCLUDE THE TITLE OF THIS WORK ON THE PERFORMING RIGHT SOCIETY'S RETURNS WHENEVER IT IS PUBLICLY PERFORMED